



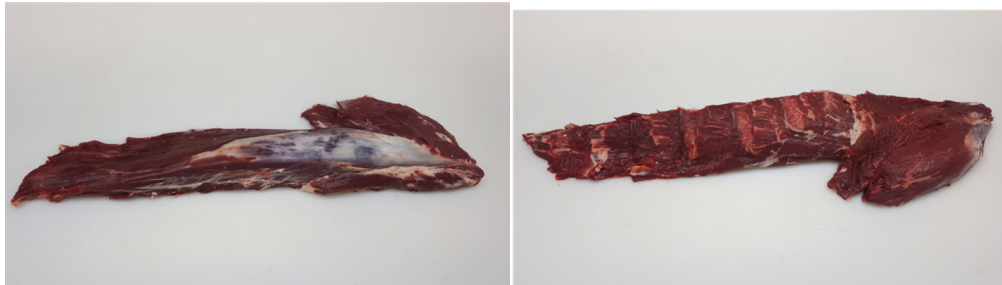
23132 - PS-TENDERLOIN SM/F 2.2KG OV VP CH



Edible

Eligible For Sale To	Belgium, Cyprus, Denmark, European Union, Faroe Islands, Germany, Gibraltar, Hong Kong, Italy, Japan, Netherlands, New Zealand, Portugal, Singapore, Slovakia, Spain, United Kingdom
Halal Status	Halal Only
Specification	B17 TENDERLOIN SIDE STRAP OFF
Cut From Grades	PS (Premium Steer/Heifer)
Spinal Cord	Removed
Bone	Boneless

Images



Quality Points

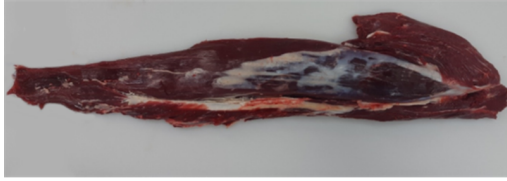
QP 1	Strap remains in situ above the tip of the butt tender
QP 2	20mm diameter cut surface at butt end
QP 3	All fat removed without damaging the product
QP 4	Trimmed to silverskin

Butchery Specification

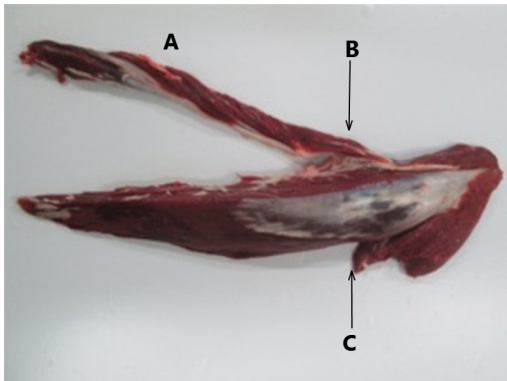
Specification	TENDERLOIN SIDE STRAP OFF
Also Known As	Tenderloin Side Muscle Off
AUSMeat Item No	2160
Derived From	TENDERLOIN
Sales Description	A fully trimmed Tenderloin with the side strap removed.



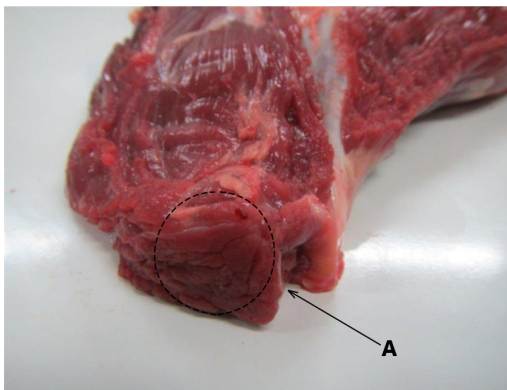
Preparation Items



- Begin with a standard **Tenderloin**
- All fat is removed without damaging the product
- Trimmed to silverskin



- Remove the strap (A) by following the natural seam up to point B
- Point B is in line with the tip of the Butt Tender (C)
- The remaining strap is left in situ



- The Butt end of the Tenderloin should have a cut surface of no less than 20mm in diameter (A)



• Final Product - Medial View




• Final Product - Lateral View

Weights

		Metric		Imperial	
		Min	Max	Min	Max
	No Weight	2.2kg		4.85lb	
	Pieces Per Pack		1		
	Catch Weight (Kg)	11kg	20kg	24.25lb	44.09lb
	Packs Per Carton		5		



 Pack	
Type	Adhesive
Stock	N28386 Blank Pack Lbl 90100 All Species
Format	BEEF MULTI EU CH CUT
<p>BONELESS BEEF PS-TENDERLOIN PRODUCT OF NEW ZEALAND OKSEKØD MØRBRAD FILET DE BOEUF RINDERFILET FILETTO DI BOVINO ADULTO SOLOMILLO DE VACUNO</p> <p>WEIGHT RANGE: 4.9lb OVER/2.2kg OVER</p> <p>ORIGIN - NEW ZEALAND</p> <p>KEEP REFRIGERATED - RECOMMENDED STORAGE TEMP. -1°C RECOMMENDED DISTRIBUTION TEMP. 0°C to 2°C</p> <p>SLAUGHTERED IN NEW ZEALAND: ME### CUTTING IN NEW ZEALAND: ME###</p> <p>LOT No.: BB238</p> <p>PRODUCTION/SLAUGHTER DATE: 25 AUG 2020 PACK DATE: 26 AUG 2020</p> <p>NOT SUITABLE FOR RAW</p> <p>CONSUMPTION COOK THOROUGHLY. USE BY: 23 DEC 2020</p> <p>DNK Oprindelsesland: New Zealand • Fersk • Slagtedato = Slaughter date • Pakkedato = Pack date • Bedst før = Use by • Anbefalet opbevaringstemperatur = Recommended storage temperature • Ikke egnet til at spise rå. Gennemsteges grundigt. • Netto vægt = Net weight.</p> <p>FRA Origine: Nouvelle-Zélande • Frais • Date d'abattage = Slaughter date • Date d'emballage = Pack date • À consommer jusqu'au = Use by • Température recommandée de conservation = Recommended storage temperature • Ne pas consommer cru. Cuire à cœur. • Poids net = Net weight.</p> <p>DEU Ursprung: Neuseeland • Frisch • Schlachtdatum = Slaughter date • Verpackungsdatum = Pack date • Zu verbrauchen bis = Use by • Empfohlene Lagertemperatur = Recommended storage temperature • Nicht für den Rohverzehr geeignet. Vollständig durchgaren. • Nettogewicht = Net Weight.</p> <p>ITA Origine: Nuova Zelanda • Prodotto fresco • Data di produzione = Slaughter date • Data di confezionamento = Pack date • Da consumarsi entro = Use by • Temperatura consigliata per la conservazione = Recommended storage temperature • Non adatto al consumo a crudo. Cuocere accuratamente. • Peso netto = Net weight.</p> <p>LESP Origen: Nueva Zelanda • Refrigerado • Fecha de sacrificio = Slaughter date • Fecha de envasado = Pack date • Fecha de caducidad = Use by • Temperatura de conservación recomendada = Recommended storage temperature • No apto para su consumo en crudo. Cocinar completamente. • Peso neto = Net weight.</p> <p>EU OFFICE: SILVER FERN FARMS GMBH, POSTFACH 60 23 62, 22233 HAMBURG, GERMANY U.K. OFFICE: SILVER FERN FARMS (UK) LTD, CAMBRIDGE ROAD, NEWMARKET - CB8 0TN - U.K.</p>	



Carton

Stock N25863 HALLY Blank 13090 CTN LBL

Format BEEF MULTI EU CH CTN

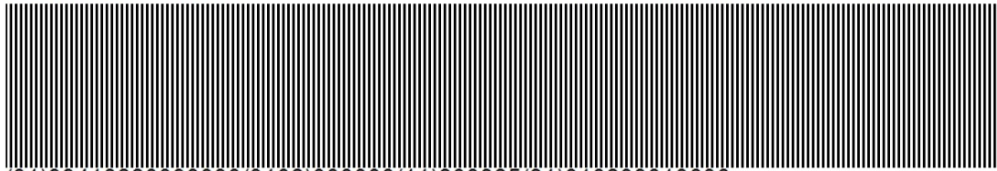
SILVER FERN FARMS LIMITED, DUNEDIN, NEW ZEALAND www.silverfernfarms.com

BONELESS BEEF
PS-TENDERLOIN
PRODUCT OF NEW ZEALAND
OKSEKØD MØRBRAD
FILET DE BOEUF
RINDERFILET
FILETTO DI BOVINO ADULTO
SOLOMILLO DE VACUNO

WEIGHT RANGE:
4.9lb OVER/2.2kg OVER

SLAUGHTERED IN NEW ZEALAND: ME##
CUTTING IN NEW ZEALAND: ME##

ORIGIN: NEW ZEALAND
KEEP REFRIGERATED
RECOMMENDED STORAGE TEMP: -1°C
RECOMMENDED DISTRIBUTION TEMP: 0° TO 2°C



(01)99418220398090(3102)000000(11)200825(21)010239013636

Prepared by: ME##
Silver Fern Farms Limited
- Dunedin, 283 Princes
Street, Dunedin

PRODUCTION/SLAUGHTER DATE: 25 AUG 2020
LOT No.: BB238
PACK DATE: 26 AUG 2020
USE BY: 23 DEC 2020

NET WEIGHT: 0.0lb
0.00kg

[H]
C23132

0000HR
SUPER 3636
ORDER

EU OFFICE: SILVER FERN FARMS GMBH, POSTFACH 60 23 62, 22233 HAMBURG, GERMANY
U.K. OFFICE: SILVER FERN FARMS (UK) LTD, CAMBRIDGE ROAD, NEWMARKET - CB8 0TN - U.K.



Additional 1	
Stock	N25863 Ctn LBL (Horizontal View)
Format	ALL SPECIES MULTI CH ADD

C

DNK	Oprindelsesland: New Zealand • Fersk • Slagtedato = Slaughter date • Pakkedato = Pack date • Bedst før = Use by • Anbefalet opbevaringstemperatur = Recommended storage temperature • Ikke egnet til at spise rå. Gennemsteges grundigt. • Netto vægt = Net weight.
NLD	Herkomst: Nieuw-Zeeland • Vers • Slachtdatum = Slaughter date • Verpakkingsdatum = Pack date • Te gebruiken tot = Use by • Aanbevolen bewaartemperatuur = Recommended storage temperature • Niet rauw eten. Goed doorbakken. • Nettogewicht = Net weight.
FRA	Origine: Nouvelle-Zélande • Frais • Date d'abattage = Slaughter date • Date d'emballage = Pack date • À consommer jusqu'au = Use by • Température recommandée de conservation = Recommended storage temperature • Ne pas consommer cru. Cuire à coeur. • Poids net = Net weight.
DEU	Ursprung: Neuseeland • Frisch • Schlachtdatum = Slaughter date • Verpackungsdatum = Pack date • Zu verbrauchen bis = Use by • Empfohlene Lagertemperatur = Recommended storage temperature • Nicht für den Rohverzehr geeignet. Vollständig durchgaren. • Nettogewicht = Net Weight.
ITA	Origine: Nuova Zelanda • Prodotto fresco • Data di produzione = Slaughter date • Data di confezionamento = Pack date • Da consumarsi entro = Use by • Temperatura consigliata per la conservazione = Recommended storage temperature • Non adatto al consumo a crudo. Cuocere accuratamente. • Peso netto = Net weight.
NOR	Opprinnelsesland: New Zealand • Fersk • Slaktedato = Slaughter date • Pakkedato = Pack date • Holdbar til = Use by • Anbefalt oppbevaringstemperatur = Recommended storage temperature • Må ikke spises rå. • Nettovekt = Net weight.
PRT	Criação/Abate/Origem: Nova Zelândia • Fresco • Data de Produção/Abate = Production/Slaughter date • Data de embalagem = Pack date • Data de validade - Use by • Conservar a = Maintain at • Impróprio para ser consumido cru. Cozinhar bem. • Peso líquido = Net weight
ESP	Origen: Nueva Zelanda • Refrigerado • Fecha de sacrificio = Slaughter date • Fecha de envasado = Pack date • Fecha de caducidad = Use by • Temperatura de conservación recomendada = Recommended storage temperature • No apto para su consumo en crudo. Cocinar completamente. • Peso neto = Net weight.
SWE	Ursprung: Nya Zeeland • Färsk • Slakt = Slaughter date • Packat = Pack date • Använd före - Use by • Rekommenderad förvaringstemperatur = Recommended storage temperature • Ej lämplig för rå konsumtion. Tillagas väl. • Nettovikt = Net weight.